

The City of Athens MUST inspect before covering.

Grease Trap Size

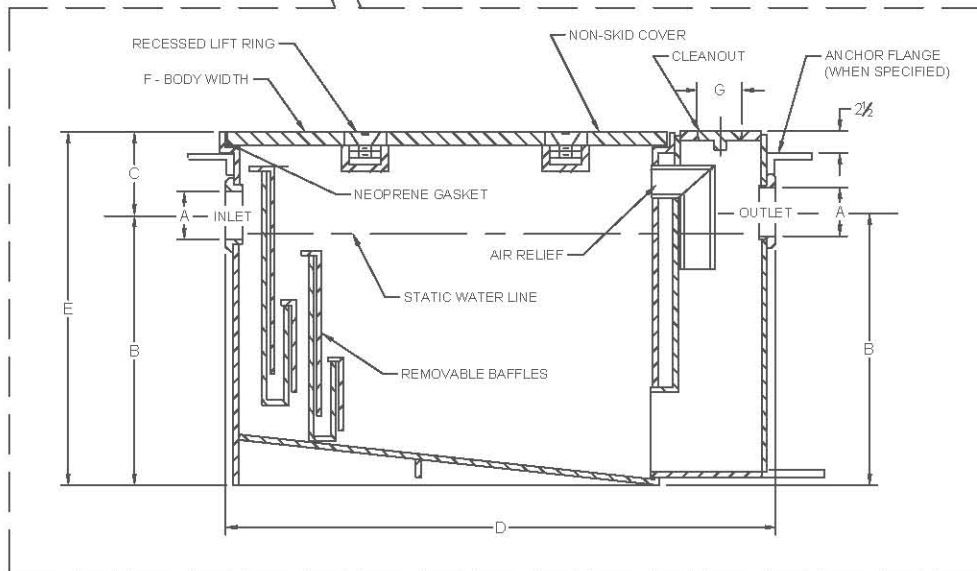
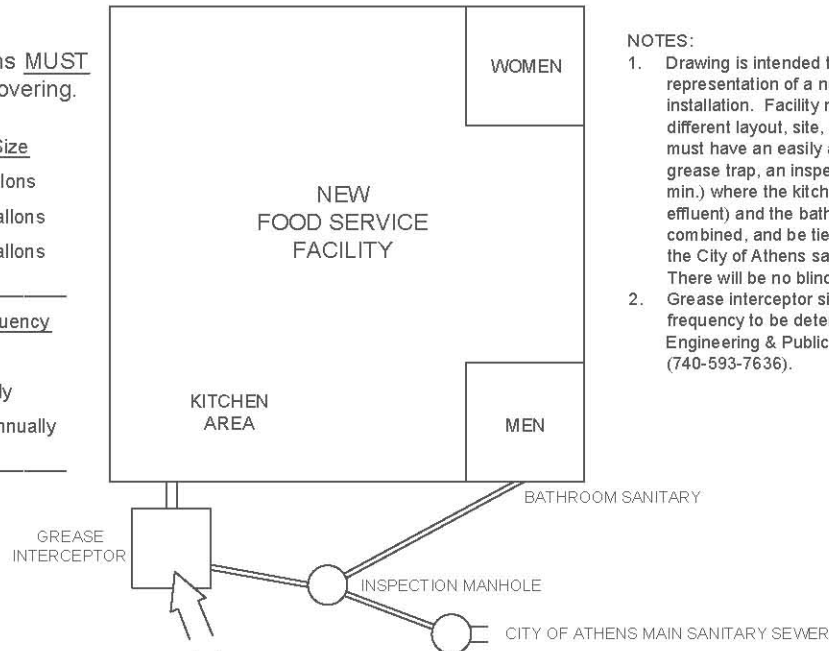
- 500 Gallons
- 1000 Gallons
- 1500 Gallons
- Other _____

Cleaning Frequency

- Monthly
- Quarterly
- Semi Annually
- Other _____

NOTES:

1. Drawing is intended to give a general representation of a new food service facility installation. Facility may vary due to different layout, site, shape or size. Facility must have an easily accessible outside grease trap, an inspection manhole (24" min.) where the kitchen line (grease trap effluent) and the bathroom sanitary line are combined, and be tied into a manhole in the City of Athens sanitary sewer system. There will be no blind tie-ins.
2. Grease interceptor size and cleaning frequency to be determined by the Engineering & Public Works Department (740-593-7636).



TYPICAL DESIGN. OTHER VARIATIONS ACCEPTABLE WITH APPROVAL OF ENGINEERING & PUBLIC WORKS (740-593-7636).

PCN/ Fig. No.	GPM Flow Rate	Grease Capacity Lbs.	Inlet & Outlet Size	Dimensions					C.O. Plug Size
				Roughing Dimensions			Body		
				A	B	C	D	Height E	
8450	75	150	4	21 1/2	15 1/2	50	37	30 1/2	3
8460	100	200	4	27	16 1/2	54	43 1/2	33 1/2	3
8465	150	300	5	33	17 1/2	60 3/4	50 1/2	38 1/2	4
8470	200	400	5	37	17 1/2	67 3/4	54 1/2	43 1/2	4
8475	250	500	5	40	18	73 3/4	58	47 1/2	4
8480	350	700	5	43 1/2	18	85 3/4	61 1/2	54 1/2	4
8490	500	1000	6	48	18	103 1/4	66	64 1/2	5

NOT TO SCALE



ENGINEERING & PUBLIC WORKS

NEW FOOD SERVICE FACILITY GREASE INTERCEPTOR SCHEMATIC

APPROVED BY: *Andrew B. Stone*
Andrew B. Stone, PE, City Engineer & Director of Public Works

STD. DRAWING #:

511

DRAWN BY: Alex Ray, EI

DATE: 8/16/12